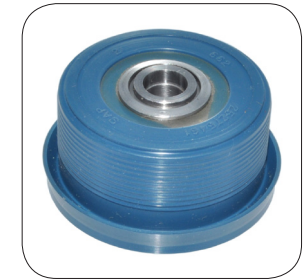
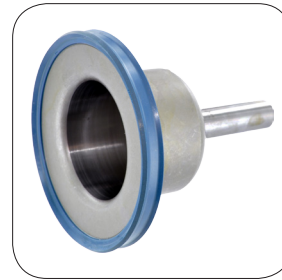
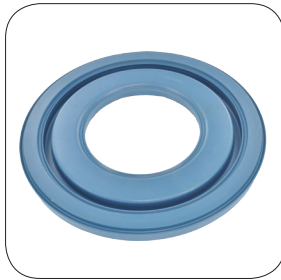
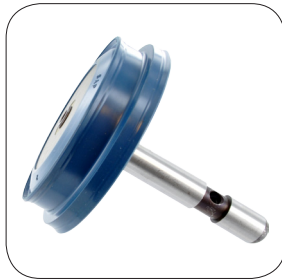


*your source for engineered solutions*



Seal Aftermarket Products offers a complete line of foreign and domestic pistons and piston kits; including;

- **Original equipment**
- **Reengineered *Hi-Per Blue* pistons**
- **Aftermarket alternatives**

### Reengineered *Hi-Per Blue* Pistons:

Hi-Per Blue® pistons are reengineered original equipment design, manufactured with upgraded high performance blue AEM (ethylene acrylic elastomer) for superior thermal and chemical resistance, with better fit and performance. Other aftermarket pistons are made of a less-tolerant alkyl acrylate copolymer (ACM).

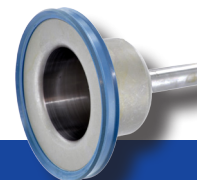
### What Is AEM?

AEM is an ASTM designation for Ethylene Acrylic Elastomer, a very high performance material used in applications where exceptional heat and oil resistance are required. While many other pistons are made of a less-tolerant alkyl acrylate copolymer, SAP *Hi-Per Blue* pistons offer superior compressive stress relaxation, dynamic fatigue resistance, vibration dampening, and resistance to acid condensates. *Hi-Per Blue* pistons and piston kits are available for a wide variety of applications, exclusively through Seal Aftermarket Products and its distributors.

*Hi-Per Blue* pistons are available exclusively through Seal Aftermarket Products.

### *Hi-Per Blue* Features and Benefits:

- Engineered utilizing best-in-class materials
- Meets or exceeds OEM specifications
- Better temperature range
- Higher tear strength
- Better bonding characteristics
- SAP-designed for better seal support
- Available separately, or in kits



### Seal Aftermarket Products

2315 SW 32 Avenue  
Pembroke Park, FL 33023 U.S.A.  
Toll Free (800) 582-2760  
Telephone (954) 364-2400  
email: [customerservice@sealsap.com](mailto:customerservice@sealsap.com)  
[www.sealsap.com](http://www.sealsap.com)

2013 SFMA & MAF Manufacturer of the Year recipient.

IMPORTANT NOTICE: Seal Aftermarket Products (SAP) reserves the right to make changes to, or discontinue any product or service identified in this publication without notice. All shipments are FCA Pembroke Park, FL. Price and availability subject to change. Possession of price list does not constitute an offer to sell.  
©2016 Seal Aftermarket Products. All rights reserved.



## PISTON KITS

SAP	Description	Pcs	Brand
<b>Chrysler</b>			
222	40TE Accum. Cover low and reverse 2-4 clutch 2004-Up	3	OE
221	41TE Accum. Cover low and reverse 2-4 clutch 2004-Up	3	OE
4877	42RLE 2003-Up	4	OE/AM
4851	45RFE 1999-On	2	OE
4859	5-45RFE 2004-Up	5	OE/AM
4856	62TE 2007-up	6	Hi-Per/OE
4860	68RFE 2007-Up	5	OE/AM
<b>Ford</b>			
32388D	4F27E 2000-Up	7	OE/AM
4876	4R100 1996-Up	2	OE
788	5R110W 2003-Up	8	OE
45188	5R55N 1999-02	3	Hi-Per/OE
4863	6F35 2009-Up	5	OE
4867	6T40 6T45 6T50 2008-Up (Generation 1)	5	OE
46388B	AX4N 1994-98	5	OE
4874	AX4S 1998-Up	4	OE
4850	AX4S AX4N 1999-Up	5	Hi-Per/OE
4873	AXODE AX4S 1996-98	5	OE
765A	CD4E 1994-Up	3	OE
765B	CD4E 2003-Up	3	OE
32388E	FN4AEL 1999-Up	7	OE/AM
32388F	FNR5 2005-09	9	AM/Hi-Per
<b>Ford/GM</b>			
4861	6F50 6F55 6T70 6T75 2007-Up	5	OE
4872	6R140 2011-Up	2	Hi-Per
<b>General Motors</b>			
796	1000/2000 Allison 2000-05	4	OE
798	1000/2000 Allison 2006-Up	4	OE
798A	1000/2000/2400 Allison 2010-Up	3	OE
732	4L60E 1997-Up	3	OE
34088	4L80 4L85E 1997-Up	3	OE
310	4T40E 1995-Up	7	OE
251	4T60E 1991-99	2	OE
626	4T65E 1997-Up	2	AM
4864	5L40E 2002-Up	9	Hi-Per
247	5L40E 2002-Up	9	OE
4869	5L40E 2nd Clutch Set 1999-01	3	Hi-Per
4857	6L45 6L50 2007-Up	5	OE
4858	6L80 6L90 2006-Up	5	Hi-Per
764	Saturn 1991-Up	4	OE
20588	VT20 VT25 2002-Up	2	AM
<b>Aisin</b>			
4866	TF-80SC TF-81SC (AF21 • AW6A-EL) 2005-Up		AM
<b>Mazda</b>			
32388G	FS5A-EL 2005-09	9	AM/Hi-Per
4855	RC4A-EL JR405E 2000-11	2	Hi-Per
<b>Mercedes</b>			
288088	722.9 Piston Kit 2004-Up	3	Hi-Per
<b>Mitsubishi</b>			
21110	A6MF1/2 2009-Up		OE

## PISTON KITS

SAP	Description	Pcs	Brand
<b>Nissan</b>			
203960AK	RE0F10A (JF011E) 2006-Up	3	Hi-Per
17388	RE5R05A 2002-Up	3	Hi-Per
<b>Renault</b>			
29080C	AR4 1988-Up	5	AM
252088	DPO AL4 1998-Up	7	Hi-Per
252088A	DPO AL4 1998-Up w/o Servo Pistons	5	Hi-Per
<b>Toyota</b>			
26288A	U140E U140F 1998-Up		Hi-Per/OE
26288C	U151E U151F 2002-Up		Hi-Per/OE
26288C-1	U151E U151F 2002-Up	6	Hi-Per/OE
26288B	U240E U241E 2000-Up		
26288F-1	U250E 2005-Up	6	Hi-Per
26288F	U250E 2005-Up- including Direct Clutch Piston	7	AM/Hi-Per
4865	U340E U341E U341F 1999-Up	3	Hi-Per/OE
27788	U660 2007-Up	5	Hi-Per
<b>Volkswagen</b>			
8404	01M 01N 01P 1995-Up	7	AM
4871	09G TF-60SN 2003-Up		Hi-Per
<b>ZF</b>			
4862	ZF4HP16 2002-Up	2	Hi-Per

## INDIVIDUAL PISTONS

SAP	Description	Brand
<b>Chrysler</b>		
49975294	40TE 2nd & 4th Clutch 04-Up	OEM
49975290	40TE 41TE Accumulator Cover 04-Up	OEM
49975293	40TE Low/Reverse 04-Up	OEM
49975291	41TE 2nd & 4th Clutch 04-Up	OEM
49975292	41TE Low/Reverse 04-Up	OEM
49975291	42RLE 2nd & 4th Clutch 03-Up	OEM
49975651	42RLE Low/Reverse Clutch 03-Up	#N/A
49575359	45RFE 5-45RE 68RFE 66RFE 4th Clutch 99-Up	OEM
49575357	45RFE 5-45RFE 2nd Clutch 99-Up	OEM
49596D	45RFE 5-45RFE 68RFE 65RFE 66RFE Retainer Underdrive Clutch (Balance) 99-Up	OEM
49595D	45RFE 5-45RFE 68RFE 65RFE 66RFE Underdrive Clutch [6-1/8in OD   2-3/4in ID] 99-Up	OEM
49975291	62TE 2nd & 4th Clutch 07-Up	OEM
49975497	62TE Direct Clutch (Compounder) 07-Up [Brown Viton]	Hi-Per
49975496	62TE Direct Clutch Balance Retainer 07-Up [Brown Viton]	Hi-Per
49975498	62TE Low Clutch 07-Up [Brown Viton]	Hi-Per
49975292	62TE Low/Reverse 07-08	OEM
49975292A	62TE Low/Reverse 09-Up (Retrofits to 41TE)	#N/A
49985	62TE Underdrive Balance 07-Up	#N/A
49575358	68RFE 66RFE 2nd Clutch 07-Up	OEM
49985	A604 Underdrive Clutch	#N/A
D92980	A604 Underdrive Housing (0.555in Tall) 89-Up	#N/A
D92980A	A604 Underdrive Housing (0.700in Tall) 04-Up	#N/A
49975290	A606 42RLE Accumulator Cover 93-Up	OEM
49985	A606 42RLE Underdrive Clutch 93-Up	#N/A
<b>Ford</b>		
32390E	4F27E FN4A-EL FNR5 FS5A-EL Forward Clutch 99-Up	AM
32390D	4F27E FN4A-EL FNR5 FS5A-EL Forward Retainer Clutch 99-Up	AM
32390F	4F27E FN4A-EL FNR5 FS5A-EL Low & Reverse 99-Up	AM
32390A	4F27E FN4A-EL FNR5 FS5A-EL Overdrive Clutch 99-Up	AM
32390B	4F27E FN4A-EL FNR5 FS5A-EL Overdrive Clutch Retainer 99-Up	AM

## INDIVIDUAL PISTONS

SAP	Description	Brand
<b>Ford</b>		
<b>32390G</b>	4F27E FN4A-EL Overdrive Servo (Bonded) 99-Up	AM
<b>32390C</b>	4F27E FNR5 Reverse Clutch 00-Up (Ford Only)	AM
<b>46496B</b>	4R100 Coast Clutch 99-Up	N/L
<b>46875283</b>	5R110W Coast Clutch 03-Up	Hi-Per
<b>46875285</b>	5R110W Direct Clutch (6.5/16in OD) 03-Up	Hi-Per
<b>46875286</b>	5R110W Direct Clutch Balance 03-Up	Hi-Per
<b>46875287</b>	5R110W Forward Clutch 03-Up	Hi-Per
<b>46875288</b>	5R110W Forward Clutch Balance 03-Up	Hi-Per
<b>46875284</b>	5R110W Intermediate Clutch 03-Up	Hi-Per
<b>46875289</b>	5R110W Low/Reverse Clutch 03-Up	Hi-Per
<b>46875282</b>	5R110W Overdrive Brake Clutch 03-Up	Hi-Per
<b>45075265</b>	5R55N 5R55S 5R55W Forward Clutch (5.090 OD)	Hi-Per
<b>56529J</b>	5R55N 5R55S 5R55W Overdrive Servo 99-Up	Hi-Per
<b>56529K</b>	5R55N 5R55W Overdrive Servo [2.575in] 99-Up	Hi-Per
<b>45075204</b>	5R55N Forward Clutch Cushion 99-02	OEM
<b>45075205</b>	5R55N Intermediate (5-15/16in OD) 99-Up	OEM
<b>56528Q</b>	5R55N Intermediate Servo [2.58in] 99-Up	Hi-Per
<b>56528P</b>	5R55N Intermediate Servo [2.78in] 99-Up	Hi-Per
<b>56530J</b>	5R55N Low/Reverse Servo 99-Up	Hi-Per
<b>56528T</b>	5R55W 5R55S intermediate Servo [2.52in] 02-Up	Hi-Per
<b>56528S</b>	5R55W 5R55S intermediate Servo [2.80in] 02-Up	Hi-Per
<b>56530K</b>	5R55W 5R55S Low/Reverse Servo 02-Up	Hi-Per
<b>46075486</b>	6F35 Balance Overdrive (4,5,6) 09-Up	OEM
<b>46075490</b>	6F35 Direct (3,5,R) 09-Up	OEM
<b>46075488</b>	6F35 Forward (1,2,3,4) 09-Up	OEM
<b>46075489</b>	6F35 Intermediate (2,6) 09-Up	OEM
<b>46075487</b>	6F35 Low/Reverse 09-Up	OEM
<b>45075256</b>	A4LD 4R44E 4R55E 5R55E (Servo) Intermediate & Overdrive 90-Up	OEM
<b>45075257</b>	A4LD Intermediate Servo 2.3L, 3.0L Eng. 1.655"	OEM
<b>33771M</b>	AOD AODE 4R70W/E 4R75W/E Reverse Servo (1 Groove) 80-Up	OEM
<b>33771</b>	AOD AODE 4R70W/E 4R75W/E Reverse Servo (1 Groove) 80-Up	#N/A
<b>33772M</b>	AOD AODE 4R70W/E 4R75W/E Reverse Servo (2 Groove) 80-Up	OEM
<b>33773M</b>	AOD AODE 4R70W/E 4R75W/E Reverse Servo (3 Groove) 80-Up	OEM
<b>46087E</b>	AODE 4R70W Overdrive Servo (2 Piece Design With Steel Sleeve) 93-Up	OEM
<b>46075253</b>	AODE 4R70W/E 4R75W/E 1-2 Accumulator 94-Up [Rubber]	OEM
<b>46088A</b>	AODE 4R70W/E 4R75W/E 2-3 Accumulator 94-Up	AM
<b>46175348</b>	AODE 4R70W/E 4R75W/E 2-3 Accumulator 94-Up [Viton]	AM
<b>46086E</b>	AODE Overdrive Servo (One Piece Design) 92-Up	OEM
<b>46088B</b>	AOD-E, 4R70W Cover 1-2 Accumulator	AM
<b>46393B</b>	AX4N (Housing) Intermediate Clutch Return 95-Up AX4S 96-Up 3.8L	OEM
<b>46392B</b>	AX4N Direct Clutch With Check Valve 95-Up (AX4S Windstar 96-97)	OEM
<b>46396D</b>	AX4N Forward Clutch 94-987 (AX4S 96-97)	AM
<b>46396B</b>	AX4N Forward Clutch 94-987 (AX4S 96-97)	OEM
<b>46390B</b>	AX4N Intermediate Clutch 95-Up (AX4S Windstar 96-97)	OEM
<b>46391B</b>	AX4N Low / Intermediate Clutch 95-04	OEM
<b>46396E</b>	AX4S AX4N Forward Clutch 98-Up	AM
<b>46396C</b>	AX4S AX4N Forward Clutch 98-Up	OEM
<b>46392M</b>	AXOD AXODE AX4S AX4N Overdrive Servo 86-97	OEM
<b>31551M</b>	C-3 A4LD 4R44E 4R55E (Servo) Intermediate & Overdrive [1.945 OD] 78-Up	OEM
<b>31550M</b>	C-3 A4LD 4R44E 4R55E 5R55E (Servo) Intermediate & Overdrive [2.10 OD] 75-Up	OEM
<b>D56528</b>	C-3 A4LD 4R44E 4R55E 5R55E (Servo) Intermediate & Overdrive [2.10 OD] 75-Up	OEM
<b>31552M</b>	C-3 A4LD 4R44E 4R55E 5R55E (Servo) Intermediate (No Dot) [1.845 OD] 83-Up	OEM
<b>33769M</b>	C6 Intermediate Servo (Blue Dot 2.130in) 74-Up	#N/A
<b>33768M</b>	C6 Intermediate Servo (Red Dot 1.980in) (N Cover) 74-Up	#N/A

## INDIVIDUAL PISTONS

SAP	Description	Brand
<b>Ford</b>		
<b>33770M</b>	C6 Intermediate Servo (Yellow Dot 2.05in) (S Cover) 74-Up	#N/A
<b>46588</b>	CD4E 2-4 Servo Cover	OEM
<b>46580</b>	CD4E Coast Clutch (Bonded) 94-97	#N/A
<b>46581A</b>	CD4E Coast Clutch (Bonded) 98-Up	OEM
<b>46584</b>	CD4E Overdrive Servo (1 Ring) 1st Design (No Spring Type) 94-Up	#N/A
<b>46584A</b>	CD4E Overdrive Servo (2 Rings) 1st Design (No Spring Type) 94-Up	#N/A
<b>46581</b>	CD4E Reverse Clutch (Bonded)	#N/A
<b>20675620</b>	CFT30 Pump Cover 05-Up [Molded]	#N/A
<b>46495A</b>	E40D, 4R100 Overdrive Clutch	N/L
<b>46495</b>	E40D 4R100 Intermediate Servo 89-Up	#N/A
<b>46495AM</b>	E40D 4R100 Overdrive 96-Up	#N/A
<b>32390CM</b>	FN4A-EL FS5A-EL Reverse Clutch (1.375 THK) 99-Up (Mazda Only)	AM
<b>32375458</b>	FNR5 FS5A-EL Direct Clutch 05-09	#N/A
<b>32375459</b>	FNR5 FS5A-EL Direct Clutch Retainer 05-09	#N/A
<b>32375460</b>	FNR5 FS5A-EL Reduction Clutch 05-09	#N/A
<b>Ford/GM</b>		
<b>25075524</b>	6F50 6F55 6T70 6T75 Balance Overdrive 07-Up	#N/A
<b>25075523</b>	6F50 6F55 6T70 6T75 Forward 07-Up	#N/A
<b>25075522</b>	6F50 6F55 6T70 6T75 Intermediate 07-Up	#N/A
<b>25075525</b>	6F50 6F55 6T70 6T75 Overdrive 07-Up	#N/A
<b>25075521</b>	6F50 6F55 6T70 6T75 Reverse 07-Up	#N/A
<b>23675618</b>	6R140 Overdrive Clutch 11-Up	Hi-Per
<b>23675619</b>	6R140 Overdrive Clutch Balance 11-Up	Hi-Per
<b>General Motors</b>		
<b>50475309A</b>	1000/2000 Allison C1 Balance 06-Up	N/L
<b>50475309</b>	1000/2000 Allison C1 Balance Clutch 00-Up	OEM
<b>50475308</b>	1000/2000 Allison C2 Balance Clutch 00-Up	OEM
<b>50475307</b>	1000/2000 Allison C3 & C4 Clutch 00-09	OEM
<b>50475307A</b>	1000/2000 Allison C3 & C4 Clutch 10-Up	#N/A
<b>31664C</b>	4L30E Accumulator Cover	AM
<b>31664BM</b>	4L30E Overrun Clutch 89-Up	AM
<b>42287E</b>	4L60E 3-4 Clutch 94-Up [Molded Rubber]	OEM
<b>K77998A</b>	4L60E 4L65E 1-2 Accumulator (Includes Lathe Cut Seal) 93-Up	#N/A
<b>42250</b>	4L60E Forward Clutch 94-Up [Molded Rubber]	#N/A
<b>42250A</b>	4L60E Overrun Clutch 94-Up [Molded Rubber]	OEM
<b>41751</b>	4L80E Direct Clutch 97-Up	Hi-Per
<b>41752</b>	4L80E Forward Clutch 97-Up	Hi-Per
<b>41750</b>	4L80E Overrun Clutch 91-Up	Hi-Per
<b>46175310</b>	4R70W/E 4R75W/E Intermediate 04-Up	OEM
<b>41851</b>	4T40E 2nd Clutch (Bonded) 95-Up	#N/A
<b>41850</b>	4T40E Coast Clutch (Inner) (Bonded) 95-Up	#N/A
<b>41854</b>	4T40E Direct Clutch (Outer) (Bonded) 95-Up	#N/A
<b>41853A</b>	4T40E Forward Clutch (Inner) (Bonded) 95-Up	OEM
<b>41853</b>	4T40E Forward Clutch (Outer) (Bonded) 95-Up	#N/A
<b>41852</b>	4T40E Reverse Clutch (Outer) (Bonded) 95-Up	#N/A
<b>41852A</b>	4T40E Reverse Input Center (Bonded) 95-Up	OEM
<b>41950</b>	4T60E 2nd Clutch 91-99	#N/A
<b>41951</b>	4T60E 3rd Clutch 89-99	#N/A
<b>41950A</b>	4T65E 2nd Clutch 97-Up	OEM
<b>41951A</b>	4T65E 3rd Clutch 97-Up	OEM
<b>49575581</b>	5-45RFE 68RFE 66RFE Low/Reverse 04-Up	#N/A
<b>14475572</b>	5L40E 2nd Clutch 99-01 [BMW]	Hi-Per
<b>14475573</b>	5L40E 2nd Clutch 99-01 [Cadillac]	Hi-Per
<b>14475558</b>	5L40E 2nd Clutch 02-Up	Hi-Per
<b>14475560</b>	5L40E 2nd Coast Clutch & Overdrive Direct Clutch 02-Up	Hi-Per

## INDIVIDUAL PISTONS

SAP	Description	Brand
<b>Ford</b>		
14475571	5L40E 2nd Coast Clutch 99-01	Hi-Per
14475554	5L40E Coast Clutch 99-Up	Hi-Per
14475556	5L40E Direct Clutch 99-Up	Hi-Per
14475555	5L40E Forward Clutch 99-Up	Hi-Per
14475559	5L40E Intermediate Clutch 99-Up	Hi-Per
14475557	5L40E Low/Reverse Clutch 99-Up	Hi-Per
14475553	5L40E Reverse Clutch 99-Up	Hi-Per
31675383	6L45 6L50 2-6 Clutch 07-Up	OEM
31675382	6L45 6L50 4-5-6 Clutch 07-Up	OEM
31675381	6L45 6L50 4-5-6 Clutch Retainer 07-Up	OEM
31675384	6L45 6L50 Low/Reverse Clutch 07-Up	OEM
31675380	6L50 1-2-3-4 & 3-5 Reverse Clutch Retainer 07-Up	#N/A
41775385	6L80 6L90 1-2-3-4 & 3-5 Reverse Clutch Retainer 06-Up	Hi-Per
41775388	6L80 6L90 2-6 Clutch 06-Up	Hi-Per
41775387	6L80 6L90 4-5-6 Clutch 06-Up	Hi-Per
41775386	6L80 6L90 4-5-6 Retainer 06-Up	Hi-Per
41775389	6L80 6L90 Low/Reverse Clutch 06-Up	Hi-Per
46075633	6T40 6T45 6T50 1-2-3-4 Clutch 08-Up	#N/A
46075646	6T40 6T45 6T50 2-6 Clutch 08-Up	#N/A
46075647	6T40 6T45 6T50 4-5-6 Retainer (Generation 1) 08-Up	#N/A
46075645	6T40 6T45 6T50 Low/Reverse Clutch 08-Up	#N/A
K77998	700R4 4L60E 1-2 / 3-4 & Forward Accumulator (0.310 OD Pin) (Includes Lathe Cut Seal) 82-93	#N/A
47051	TAAT 1st Clutch Drum 91-Up	#N/A
47050	TAAT 2nd - 3rd - 4th Clutch Drum 91-Up	#N/A
<b>Honda</b>		
28950EF	B7XA,BAXA 1st & 2nd Clutch Retainer	AM
14075513	MLYA, SLYA 1st Clutch (Starting Clutch)	Hi-Per
<b>Kia</b>		
21175622	A6MF1/2 3-5-R Balance Clutch 09-Up	#N/A
21175623	A6MF1/2 Overdrive Clutch 09-p	#N/A
<b>Mazda</b>		
32475279	JF506E, 5F31J, 09A High Clutch Balance	AM
19375495	RC4A-EL JR405E High Clutch 00-11	#N/A
19375494	RC4A-EL JR405E Low Clutch 00-11	#N/A
<b>Mercedes</b>		
31485CA	722.6 B1 Clutch (Chrysler) 04-Up	N/L
31485C	722.6 B1 Clutch (Mercedes) 97-Up	N/L
28875616	722.9 B1 Clutch 04-Up	#N/A
28875615	722.9 B3 Clutch 04-Up	#N/A
28875617	722.9 K1 Clutch 04-Up	#N/A
<b>Nissan</b>		
20375492	RE0F09A Forward Clutch Retainer 03-Up	Hi-Per
20375493	RE0F09A, JF010E Reverse Clutch	Hi-Per
20375316	RE0F10A (JF011E) Forward Clutch 06-Up	Hi-Per
20375317	RE0F10A (JF011E) Forward Clutch Retainer 06-Up	Hi-Per
20375315	RE0F10A (JF011E) Reverse Brake 06-Up	Hi-Per
17375584	RE5R05A Balance Direct 02-Up	Hi-Per
17375583	RE5R05A Balance High / Low Clutch 02-Up	Hi-Per
17375582	RE5R05A Input Clutch 02-Up	Hi-Per
<b>Renault</b>		
34175227	AD4 AD8 Reverse (K2) 89-Up	AM
29075240	AR4 AD4 (B2) 88-Up	#N/A
29085C	AR4 AD4 AD8 3-4 Clutch (K3) 89-Up	#N/A
29075255	AR4 AD4 AD8 3-4 Clutch (K3) 89-Up	OEM
34175220	AR4 AD4 AD8 Forward Clutch (K1) 89-Up	#N/A
34175226	AR4 AD4 AD8 Low/Reverse (B1) 89-Up	#N/A

## INDIVIDUAL PISTONS

SAP	Description	Brand
<b>Ford</b>		
25275464	DPO E1 Clutch 98-Up	#N/A
25275465	DPO E1 Clutch Retainer 98-Up	#N/A
25275466	DPO E2 Clutch 98-Up	#N/A
25275467	DPO E2 Clutch Retainer (Accumulator) 98-Up	#N/A
25275463	DPO F1 Brake 98-Up	#N/A
25275461	DPO F2 Servo 98-Up	#N/A
25275462	DPO F3 Servo 98-Up	#N/A
<b>Toyota</b>		
26285	Set U140E U140F U240E U241E Direct Clutch & Balance 98-Up	#N/A
26286	Set U140E U140F Underdrive Clutch & Balance 98-Up	#N/A
26275246	Set U240E U241E Underdrive Clutch & Balance 00-Up	#N/A
26287	Set U340E U341E U341F Forward Clutch & Retainer 99-Up	#N/A
26275310	U140E U140F U240E U241 Direct Clutch 98-Up	Hi-Per
26275311	U140E U140F U240E U241E Direct Clutch Balance 98-Up	Hi-Per
26275586	U140E/F U150E/F U151F Underdrive Clutch 98-Up	Hi-Per
26275587	U140E/F U150E/F U151F Underdrive Clutch Balance 98-Up	Hi-Per
26275272	U150E U151E U151F Direct Clutch 02-Up	OEM
57528F	U150E U151E U151F Direct Clutch 02-Up	#N/A
26275270	U150E U151E U151F Forward Clutch 02-Up	#N/A
26275274	U150E U151E U151F Forward Clutch Balance 02-Up	#N/A
26275271	U150E U151E U151F Overdrive Clutch 02-Up	#N/A
26275273	U150E U151E U151F Overdrive Clutch Balance 02-Up	#N/A
26275247	U240E U241E Forward Clutch 00-Up	#N/A
26275588	U240E U241E U250E Underdrive Clutch 00-Up	Hi-Per
26275589	U240E U241E U250E Underdrive Clutch Balance 00-Up	Hi-Per
26275590	U340 U341E U341F Forward Clutch 99-Up	#N/A
26275591	U340 U341E U341F Forward Clutch Retainer 99-Up	#N/A
26275603	U340E U341E U341F Direct Drum 99-Up	#N/A
27775660	U660E #3 Brake 07-Up	Hi-Per
27775663	U660E Direct Clutch 07-Up	Hi-Per
27775662	U660E Forward Clutch 07-Up	Hi-Per
27775661	U660E Forward Clutch Retainer 07-Up	Hi-Per
27775664	U660E Forward/Direct Drum Sleeve 07-Up	Hi-Per
<b>Volkswagen</b>		
31175251	010 087 089 090 1st Intermediate Clutch (Without Check Ball) [Molded Rubber]	AM
27575580	01J Reverse Brake 02-Up	AM
8403	095 096 097 098 89-94 (5 Pistons)	#N/A
34175220	095 096 097 098 Forward Clutch (K1) 89-94	AM
34175221	095 096 097 098 Forward Clutch (K1) 95-Up	AM
34175223	095 096 097 098 Fourth Clutch (K3) 89-94	AM
34175224	095 096 097 098 Fourth Clutch (K3) 95-Up	AM
34175228	095 096 097 098 Intermediate & 2-4 Clutch (B2) 89-Up	AM
34175226	095 096 097 098 Low/Reverse Clutch (B1) 89-Up	AM
34175227	095 096 097 098 Reverse (K2) 89-Up	AM
34175225	096 097 098 3-4 Clutch Retainer (K3) 95-Up	AM
34175222	096 097 098 Forward Clutch Spring Retainer (K1) 95-Up	AM
34175446	09G (TF-60SN) K1 Clutch Balance 03-Up	Hi-Per
34175444	09G (TF-60SN) K2 Clutch Apply 03-Up	Hi-Per
34175445	09G (TF-60SN) K2 Clutch Balance 03-Up	Hi-Per
34175447	09G (TF-60SN) K3 Clutch Balance 03-Up	Hi-Per
31175252	010, 087, 089 Direct	AM
31175250	010, 087, 089 Forward	AM
31175253	010, 087, 089 Low And Reverse w/Bleed Valve	AM
<b>ZF</b>		
14575449	ZF4HP16 C Clutch 00-Up	#N/A
14575450	ZF4HP16 D Clutch 00-Up	#N/A